

MONTHLY MEMBERSHIP PROGRESS REPORT

LOCATION SLOVENIA

District 129

Results as of: 6/30/2021

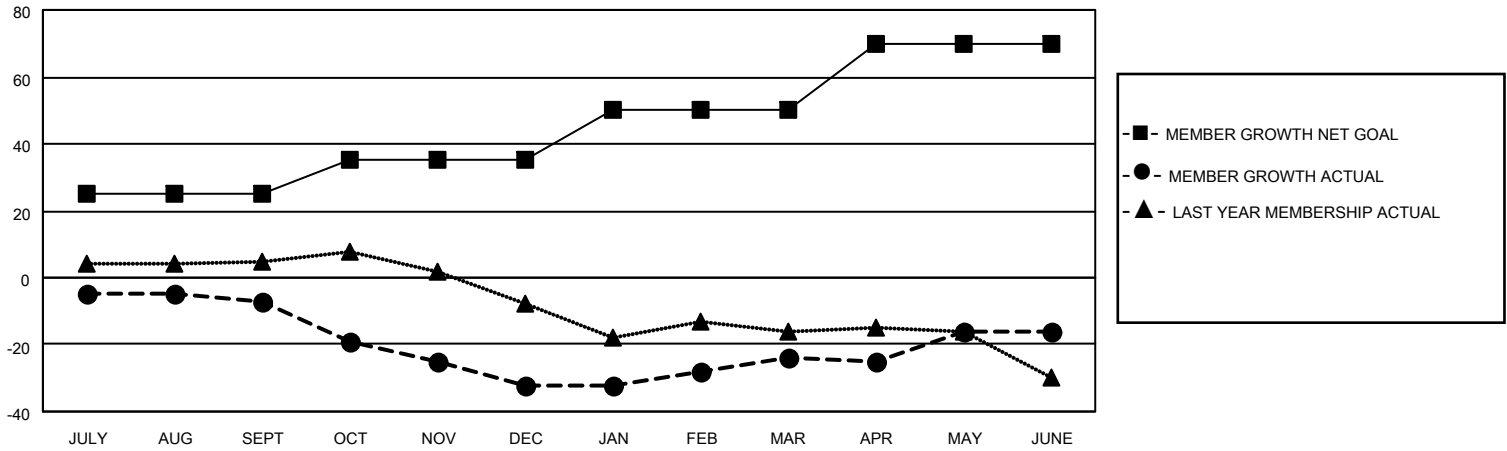
Clubs			
RESULTS FOR 2020-2021			
QUARTER	NEW CLUB GOAL	NEW CLUBS	DROPPED CLUBS
JULY/AUG/SEPT	0	0	0
OCT/NOV/DEC	0	0	0
JAN/FEB/MAR	1	0	1
APR/MAY/JUNE	0	0	0

Members			
RESULTS FOR 2020-2021			
QUARTER	MEMBER GROWTH NET GOAL	MEMBER GROWTH ACTUAL	DROPPED MEMBERS ACTUAL (including transfers)
JULY/AUG/SEPT	25	13	16
OCT/NOV/DEC	10	2	27
JAN/FEB/MAR	15	17	9
APR/MAY/JUNE	20	30	20

GOALS AND ACTUAL NEW CLUBS CUMULATIVE



GOALS AND ACTUAL MEMBERS CUMULATIVE



DROPPED CLUBS: 1	34 CLUBS OF 59 ADDED 1 OR MORE NEW MEMBERS	<u>GENDER DISTRIBUTION</u> MALE 934 (64.59%) FEMALE 512 (35.41%)
<u>DROPPED MEMBERS</u> DECEASED 7 CLUB CANCELLED 3 OTHER 62 <hr/> TOTAL 72	CLICK HERE FOR CUMULATIVE MEMBERSHIP DATA	TOTAL FAMILY UNIT MEMBERS 24 FAMILY MEMBERS PAYING HALF DUES 12